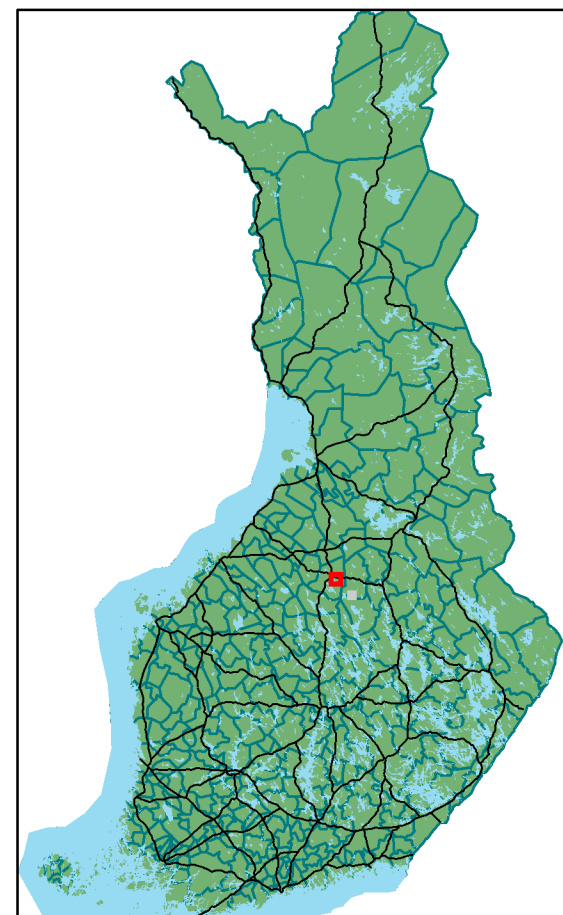
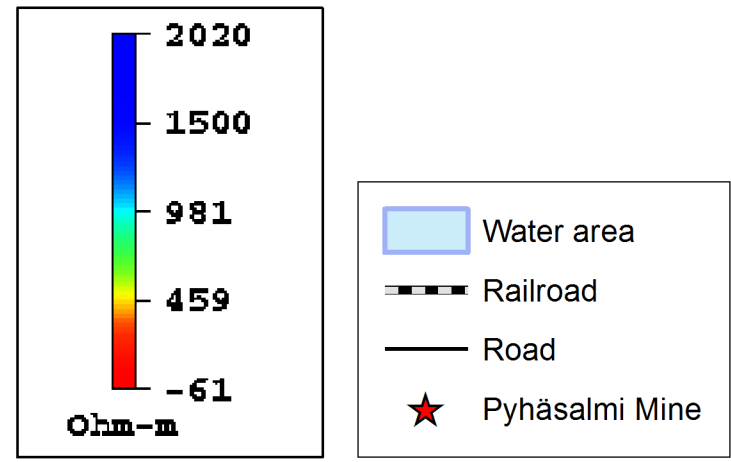
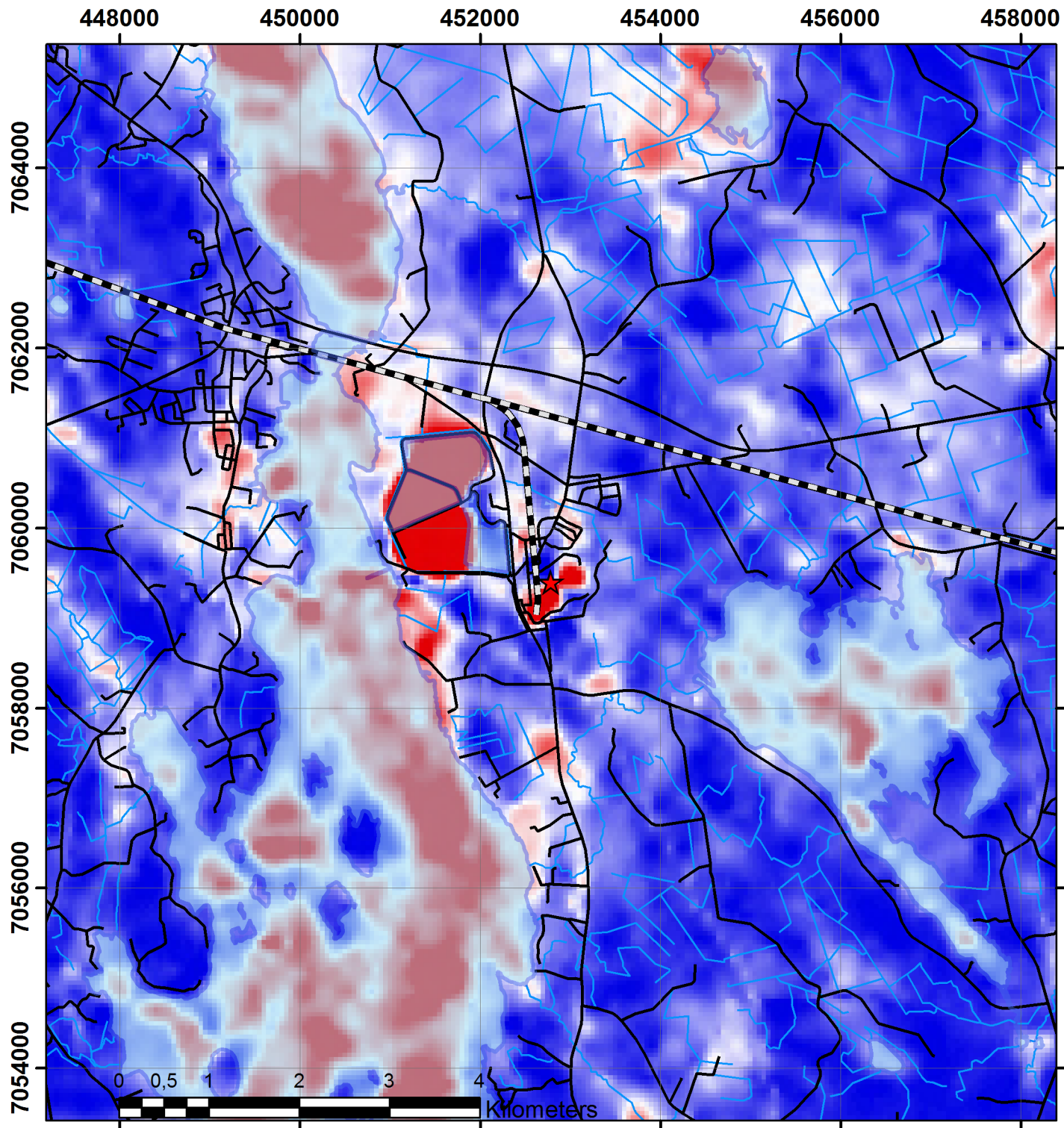


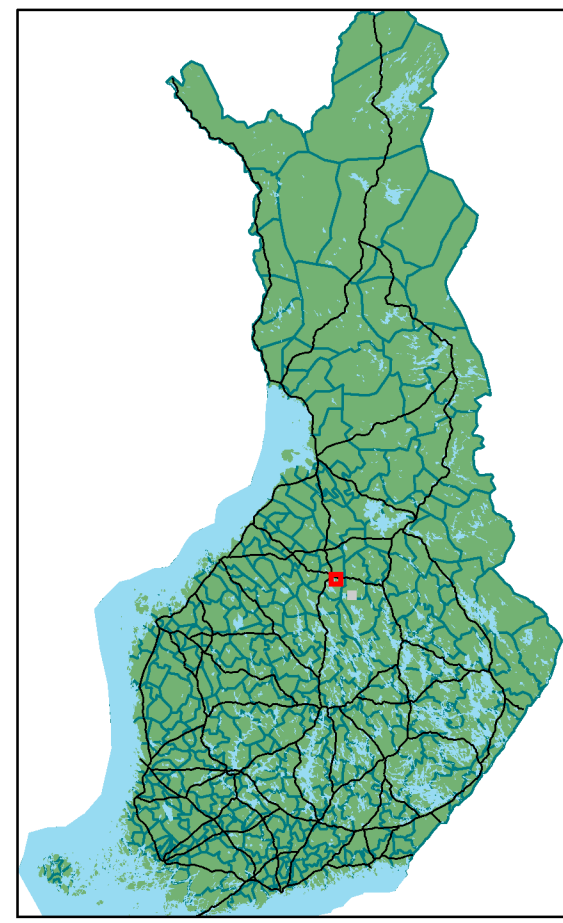
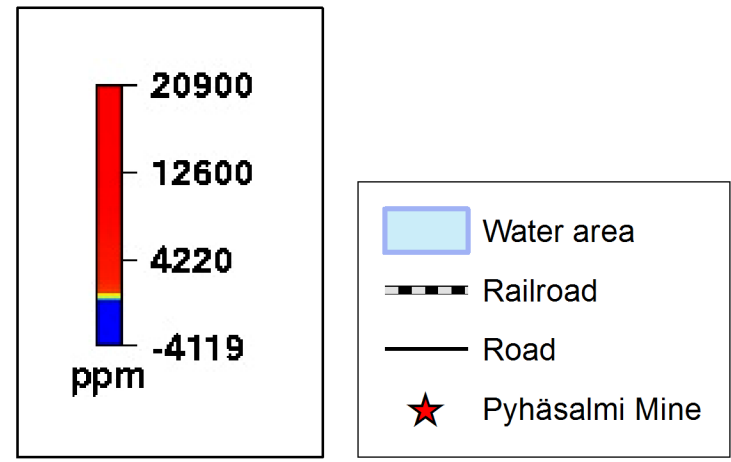
Pyhäsalmi aerolelectromagnetic apparent resistivity



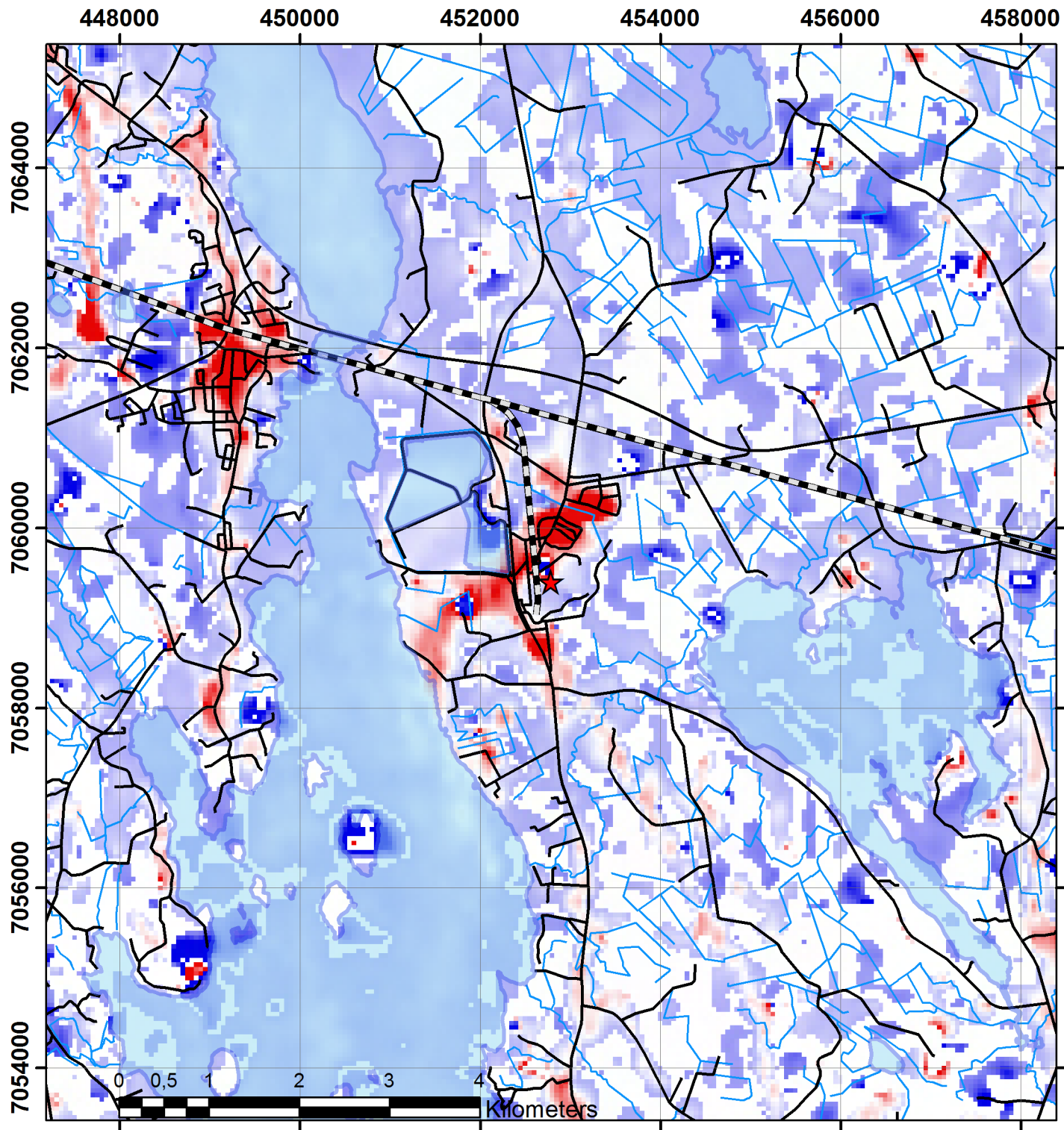
Map created: 16.7.2018
 Aerolelectromagnetic apparent resistivity map of Finland
 © Geological Survey of Finland, 2016
 Topographic Map 1:100 000, General map 1:4 500 000,
 Place names 1:20 000 © National Land Survey of Finland, 2015



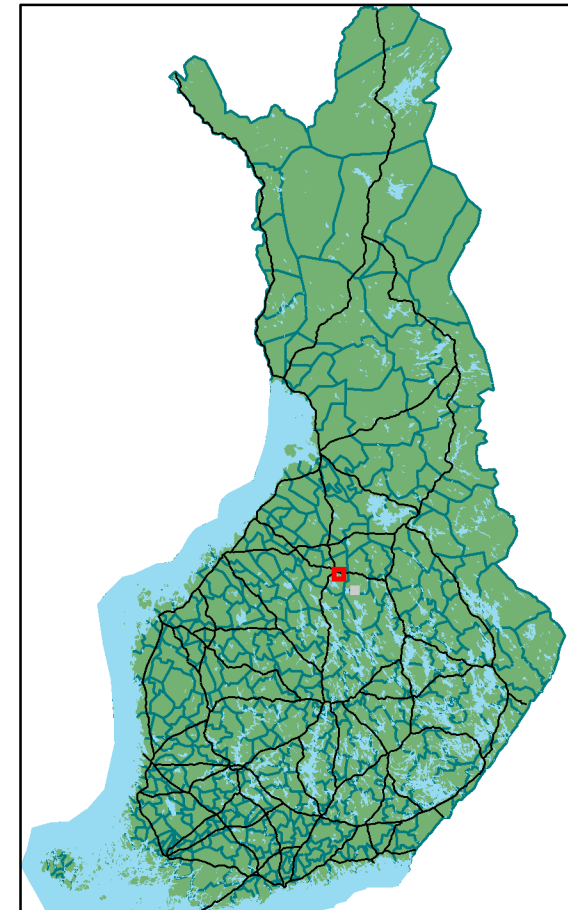
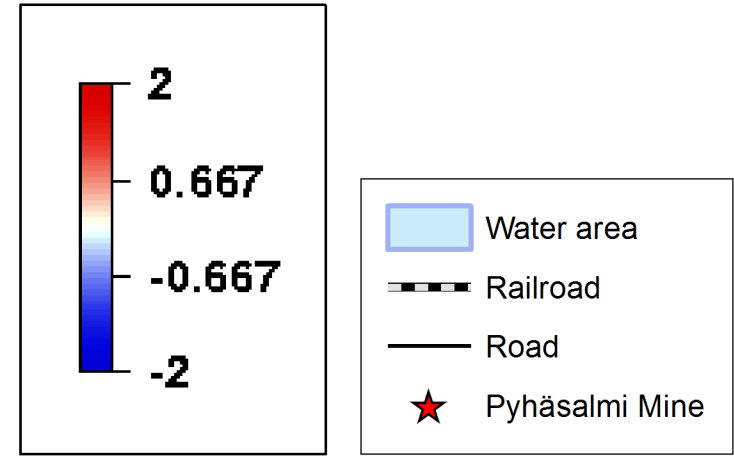
Pyhäsalmi aeroelectromagnetic imaginary component



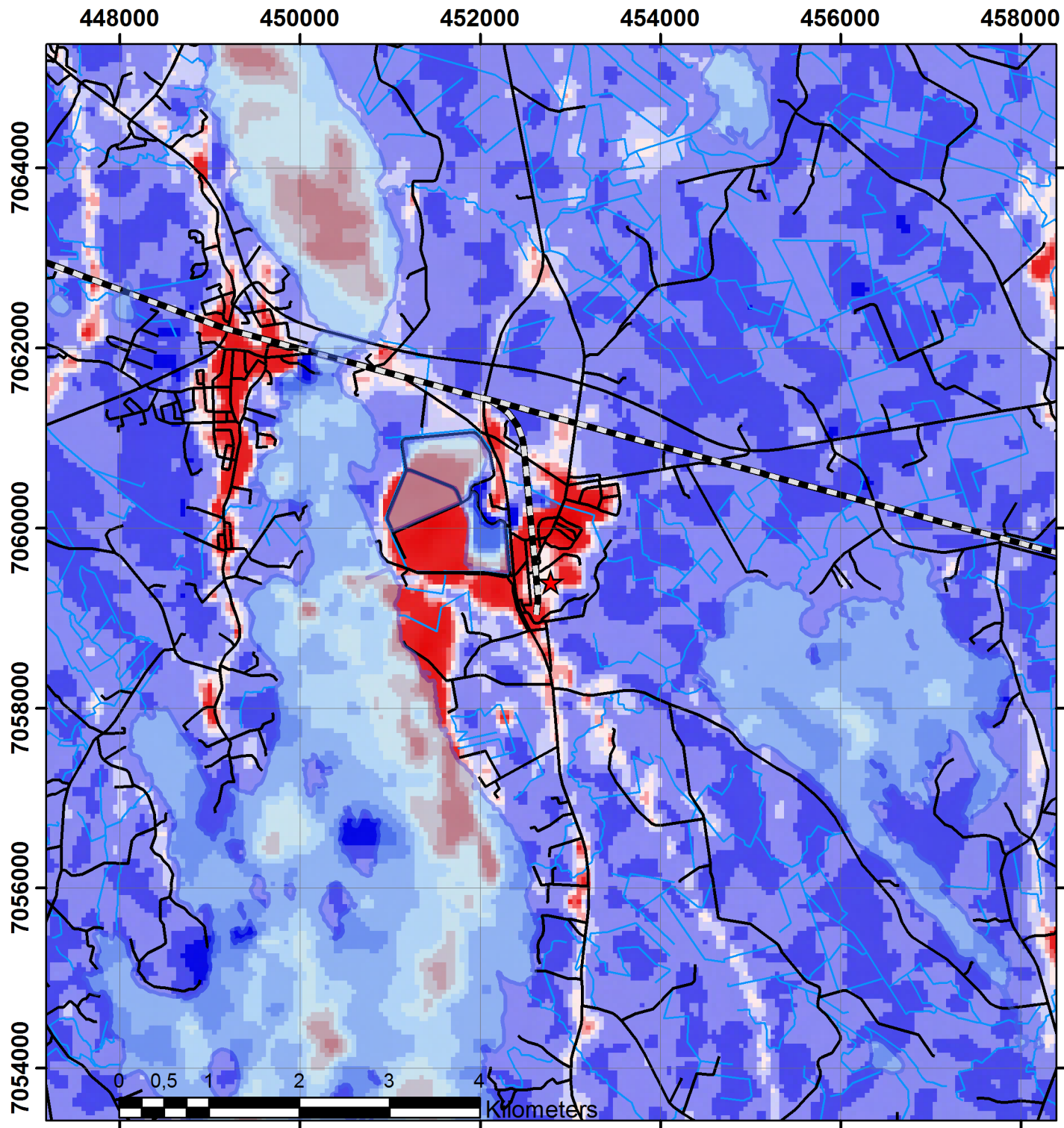
Map created: 16.7.2018
 Aeroelectromagnetic imaginary component map of Finland
 © Geological survey of Finland, 2016
 Topographic Map 1:100 000, General map 1:4 500 000,
 Place names 1:20 000 © National Land Survey of Finland, 2015



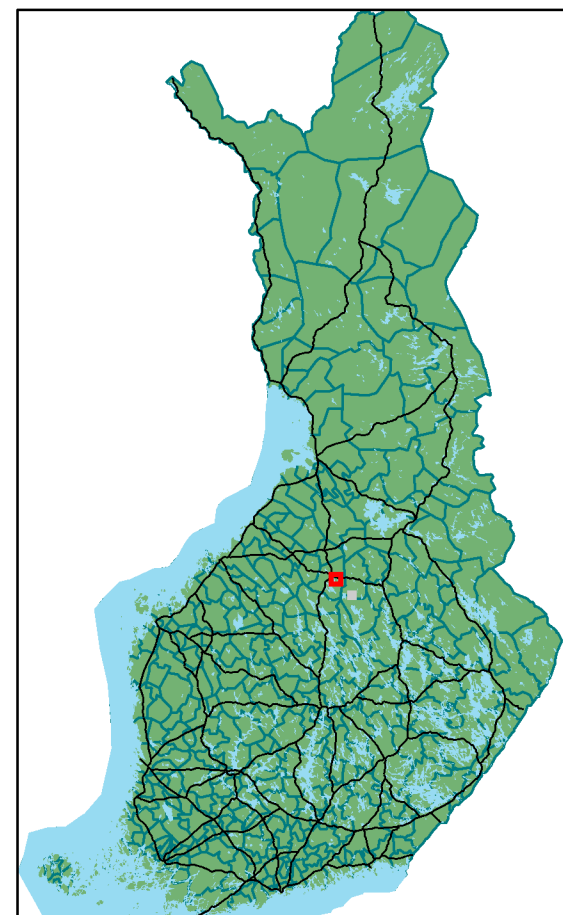
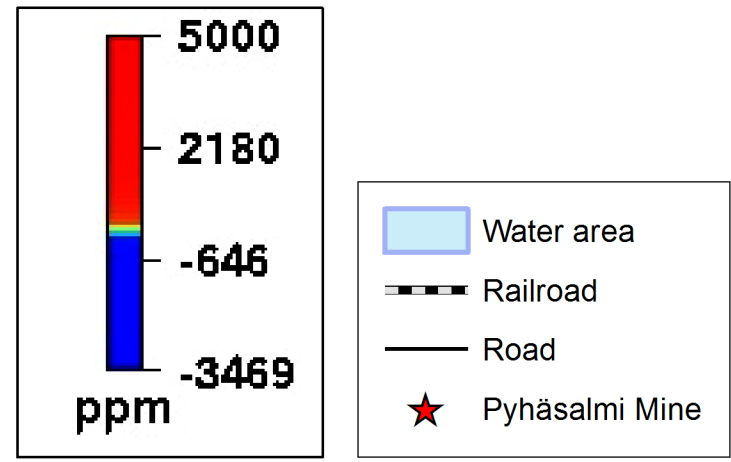
Pyhäsalmi aeroelectromagnetic ratio



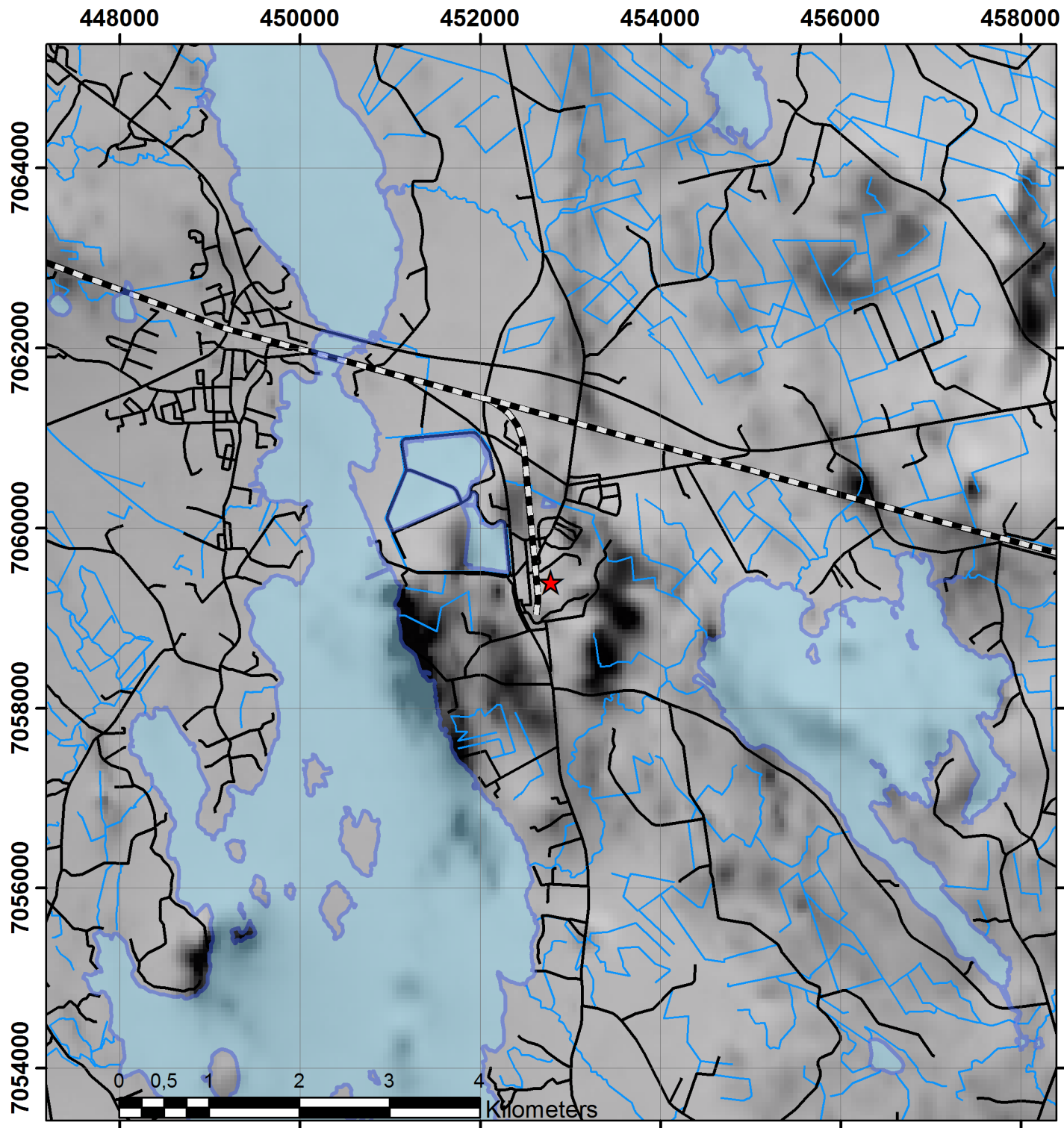
Map created: 16.7.2018
 Aeroelectromagnetic ratio map of Finland
 © Geological survey of Finland, 2016
 Topographic Map 1:100 000, General map 1:4 500 000,
 Place names 1:20 000 © National Land Survey of Finland, 2015



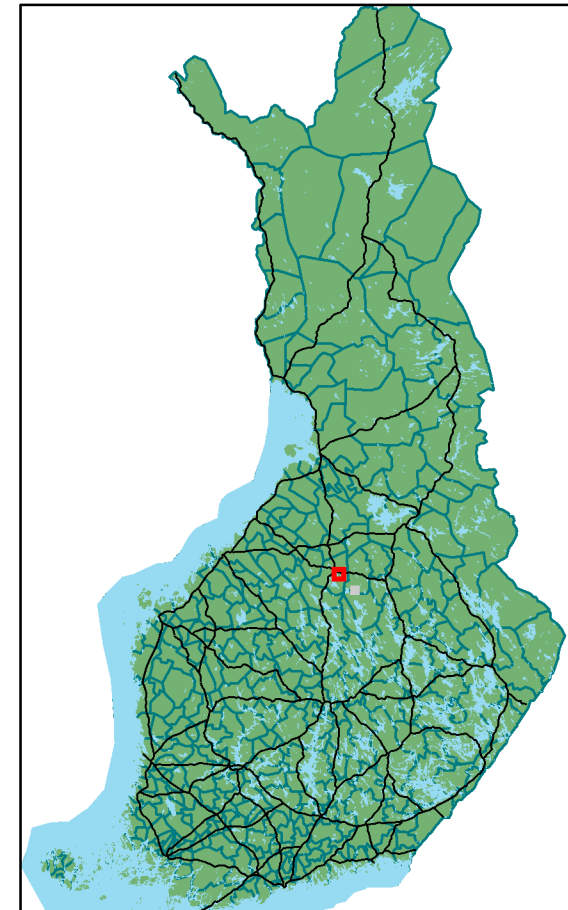
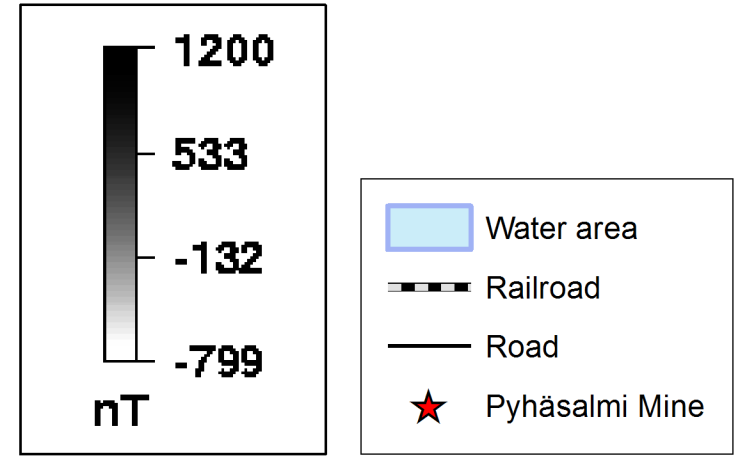
Pyhäsalmi aeroelectromagnetic real component



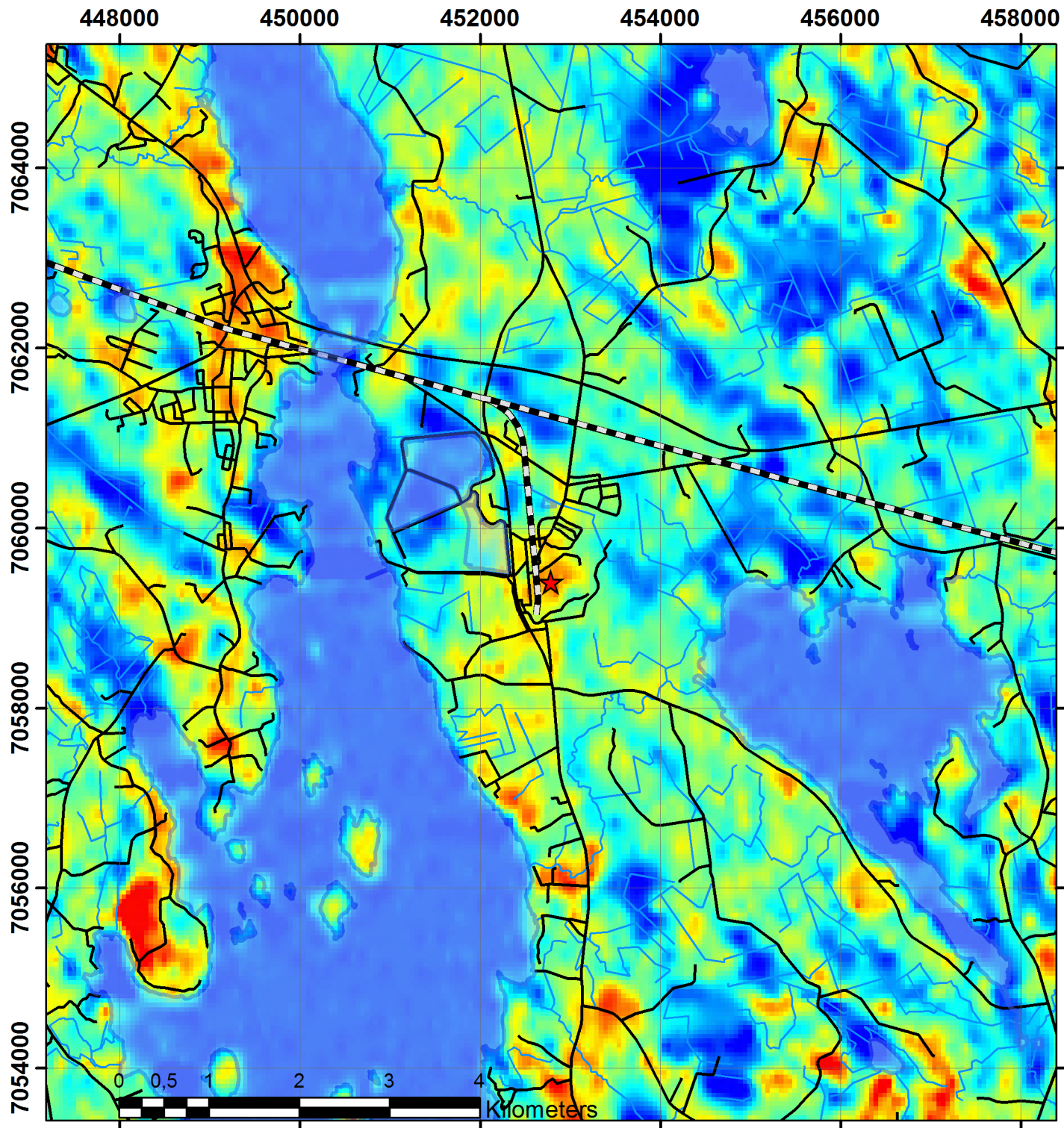
Map created: 16.7.2018
 Aeroelectromagnetic real component map of Finland
 © Geological survey of Finland, 2016
 Topographic Map 1:100 000, General map 1:4 500 000,
 Place names 1:20 000 © National Land Survey of Finland, 2015



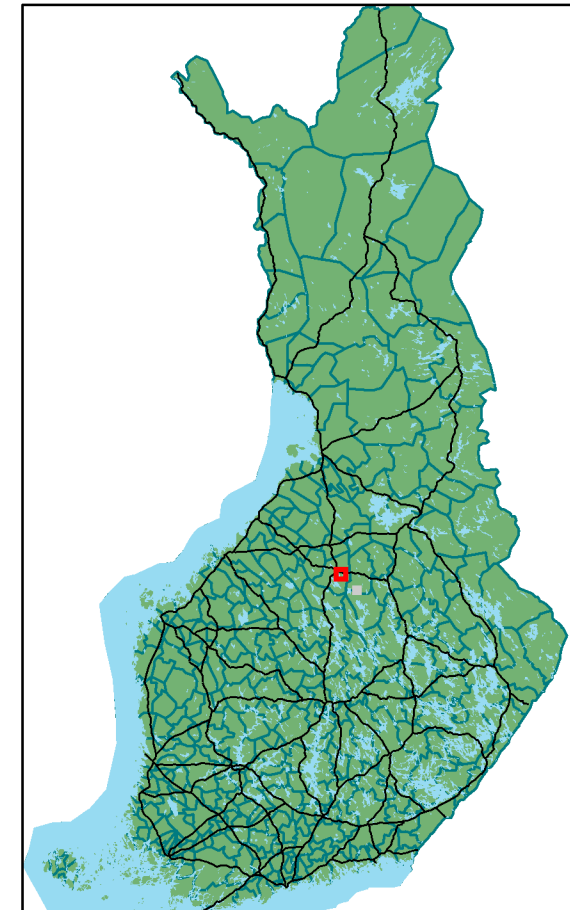
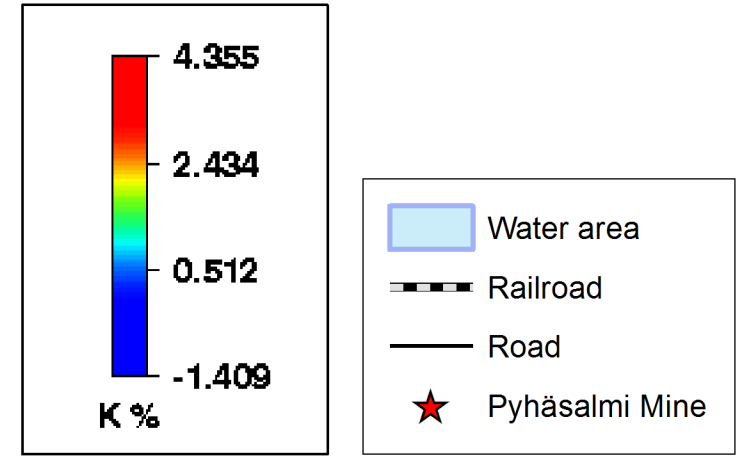
Pyhäsalmi aeromagnetic anomaly



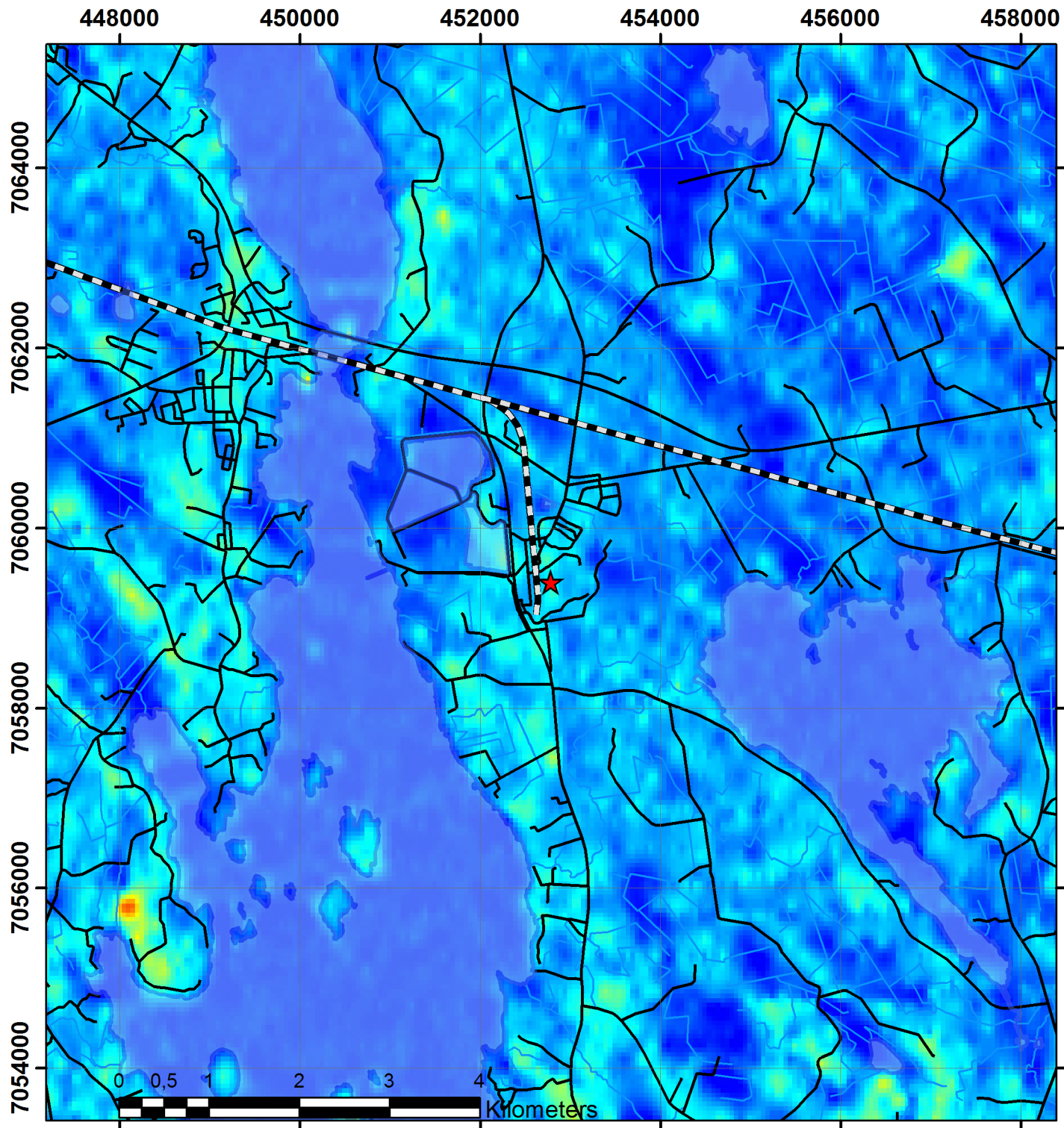
Map created: 16.7.2018
 Aeromagnetic anomaly map of Finland
 © Geological survey of Finland, 2016
 Topographic Map 1:100 000, General map 1:4 500 000,
 Place names 1:20 000 © National Land Survey of Finland, 2015



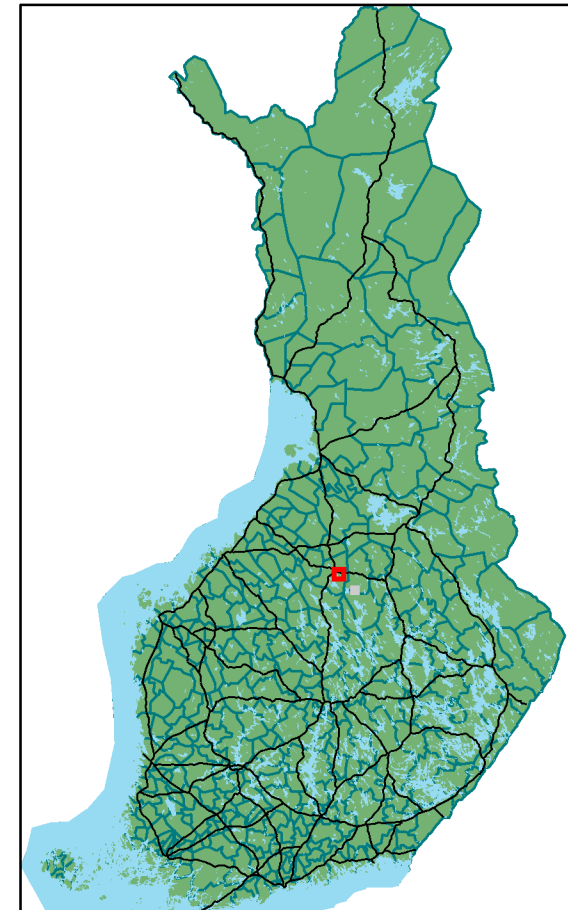
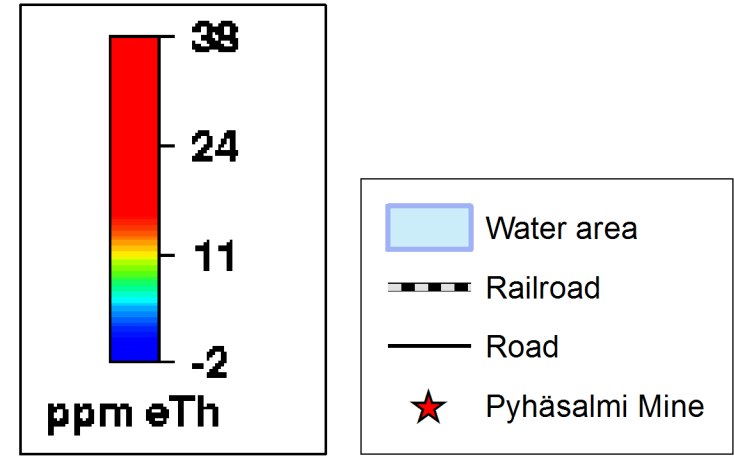
Pyhäsalmi aeroradiometric potassium map



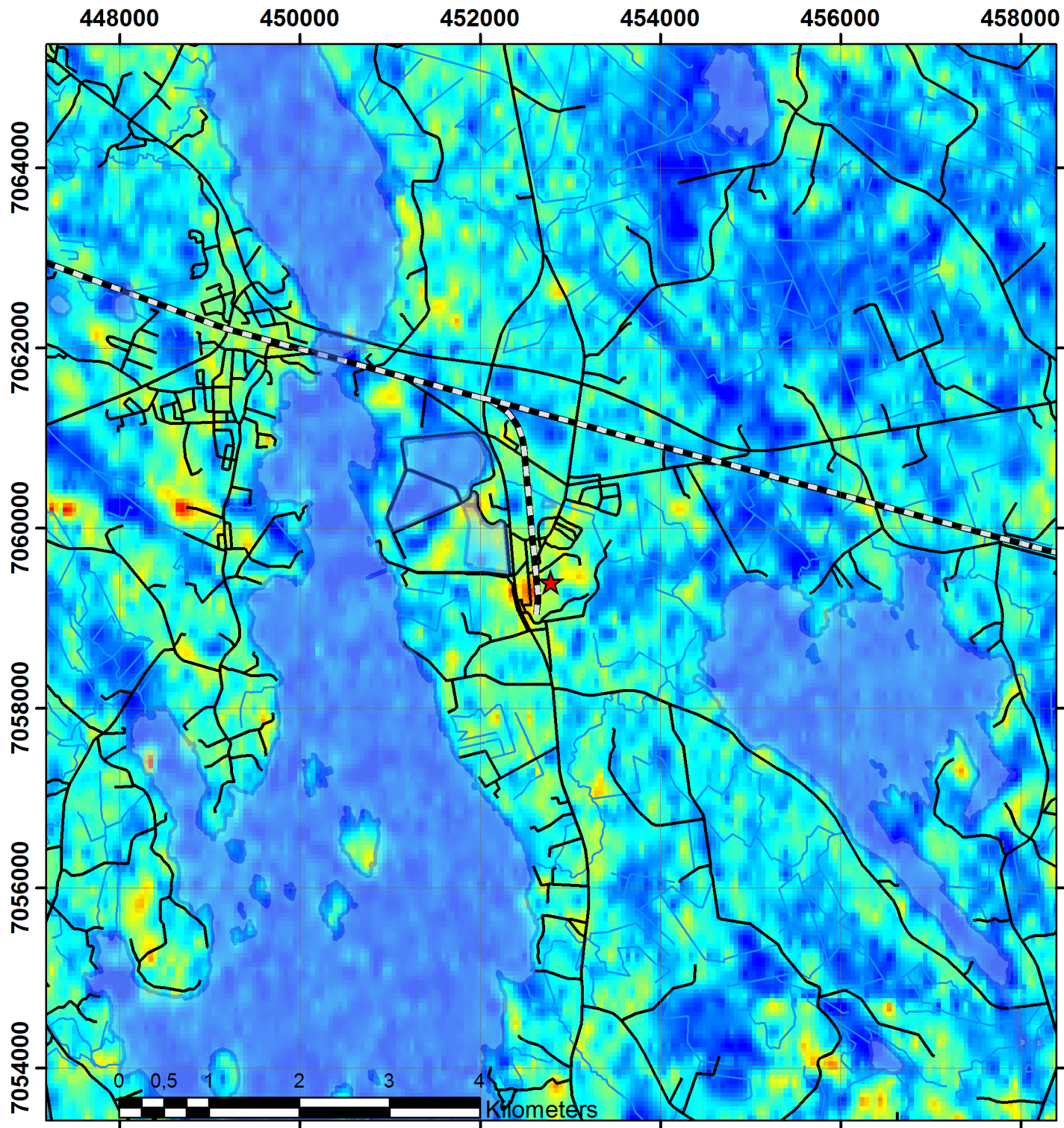
Map created: 16.7.2018
 Aeroradiometric potassium map of Finland
 © Geological survey of Finland, 2016
 Topographic Map 1:100 000, General map 1:4 500 000,
 Place names 1:20 000 © National Land Survey of Finland, 2015



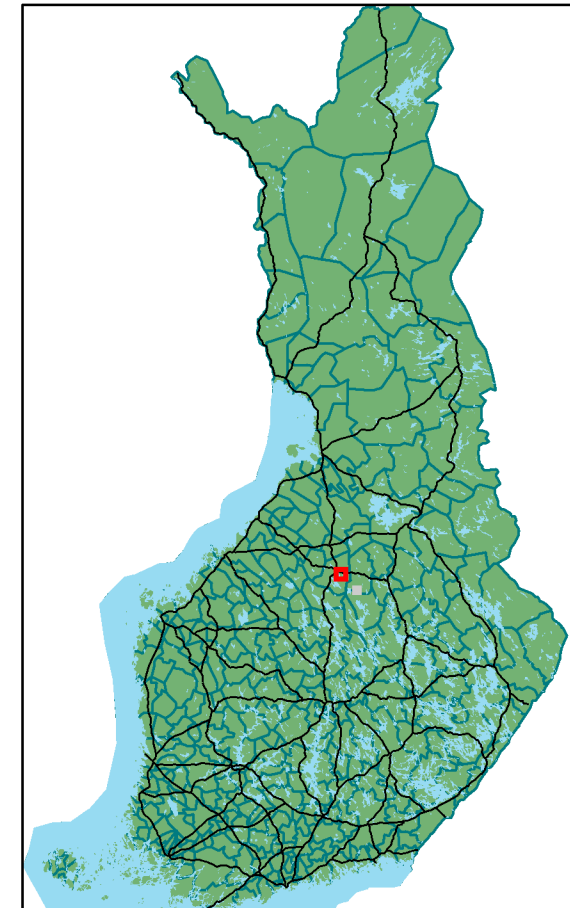
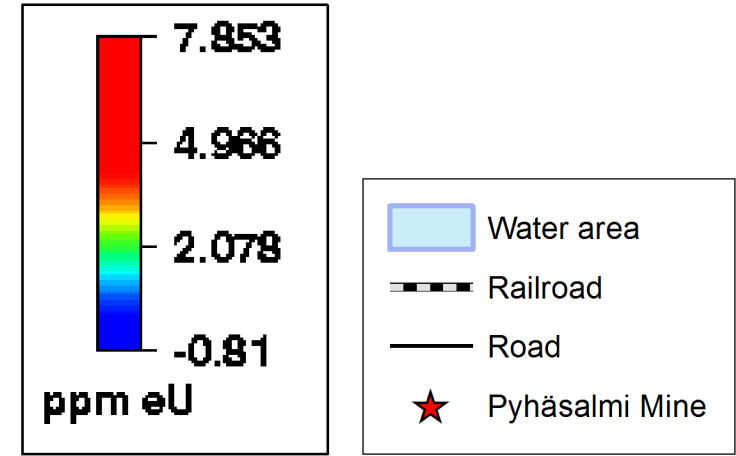
Pyhäsalmi aeroradiometric thorium map



Map created: 16.7.2018
 Aeroradiometric thorium map of Finland
 © Geological Survey of Finland, 2016
 Topographic Map 1:100 000, General map 1:4 500 000,
 Place names 1:20 000 © National Land Survey of Finland, 2015



Pyhäsalmi aeroradiometric uranium map



Map created: 16.7.2018
 Aeroradiometric uranium map of Finland
 © Geological Survey of Finland, 2016
 Topographic Map 1:100 000, General map 1:4 500 000,
 Place names 1:20 000 © National Land Survey of Finland, 2015